

Est - 13th July 2024

Broadnook Garden Village Show Home Albert Henry Interiors look book

A guide to our products
The Darlington, Broadnook



Lansdowne House, 207 Leicester
Road, Ibstock, LE67 6HP

01530 265 645
www.alberthenryinteriors.co.uk

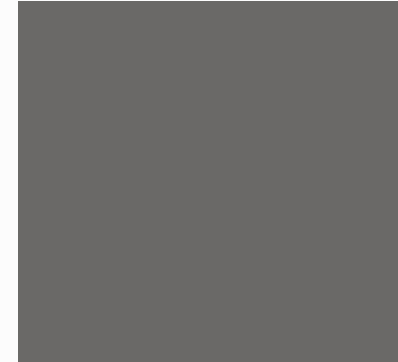
Sitting Room



Charcoal Acoustic Panel



White Levanto Marble

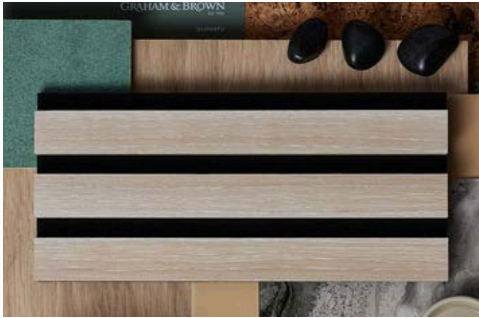


Onyx

Contemporary White Levanto Media unit, complemented by Onyx illuminated shelving and Charcoal Acoustic panelling.



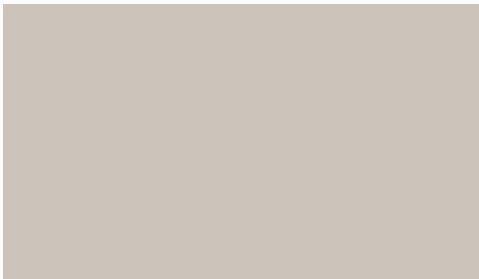
Home office



Washed Oak



Onyx



Cashmere



Cashmere and Onyx corner home office, complemented by Washed Oak acoustic panelling and Warm White LED lights.

Hallway

Charcoal acoustic panel,
complemented by a
handmade Matt Black radiator
cover.



Kitchen

Stone Grey floating media unit, with an Onyx full-height shelf unit, complemented by Washed Oak acoustic panelling.

Onyx home bar unit



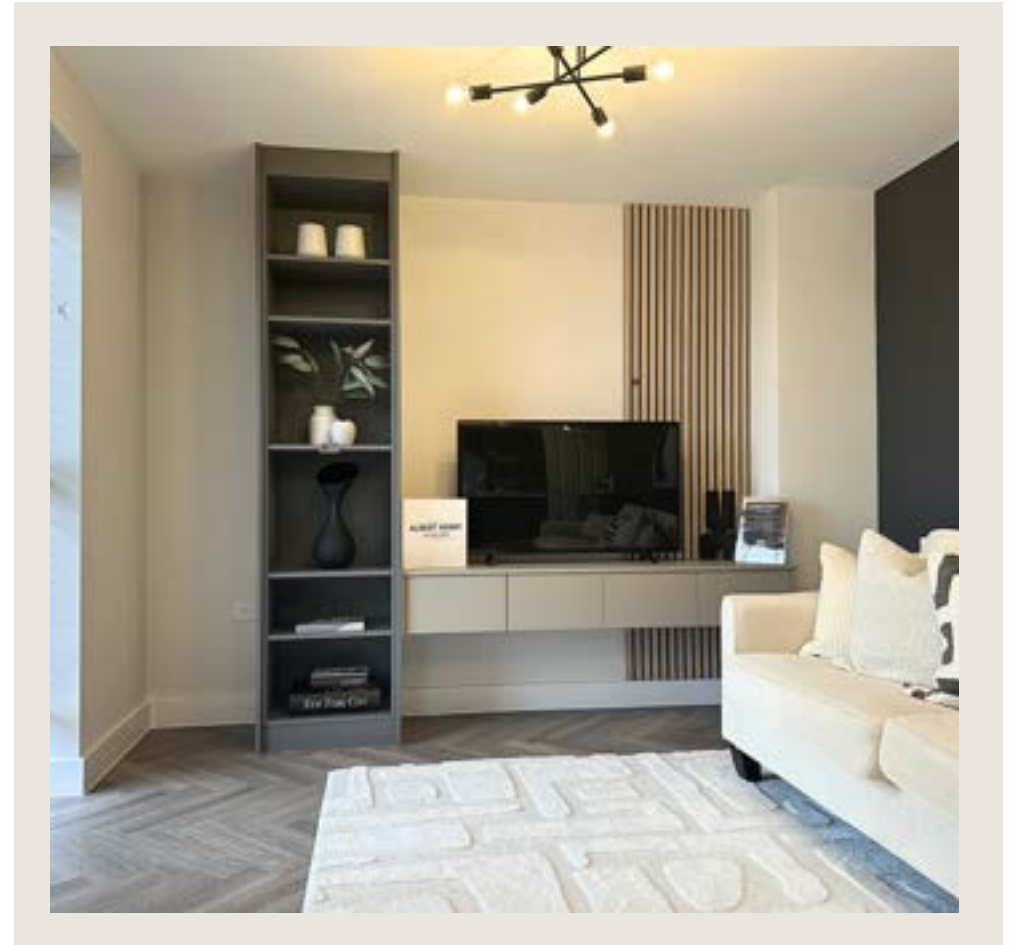
Onyx



Washed Oak



Stone Grey



Master Bedroom

2 + 2 Cashmere fluted wardrobe,
Black Camden handles
*Internals include ~

Two-drawer 600mm Cashmere
bedsides, Black lipped handles,
Black timber legs.

Two-drawer 1000mm Cashmere
dressing table, Black lipped
handles.



Bedroom 2



Two-door Sliding Wardrobe, Configuration B, Chromix and Grey Mirror, Black Curva Frames, Cashmere Surround.

*Internals include - Three- drawer internal chest, Standard top shelf and hanging.

Two-drawer 400mm Black bedsides, complemented by Black lipped handles.

1/3 Wall contemporary vertical panelling.



Bedroom 3

Two-door Sliding Wardrobe, Configuration B, Light Grey Suede and Pure White Glass, Black Curva frames, Onyx Surround.

*Internals include - Three- drawer internal chest, Standard top shelf and hanging.

Two-drawer 400mm Black bedside, complemented by Black lipped handles.

1/3 Wall contemporary vertical panelling.



Bedroom 4



Four-door Stone Grey Four-panel Wardrobe, Stone Grey Surround, H7 Handles.

*Internals- Half-height shelf unit, Standard top shelf and hanging.

Cashmere and Stone Grey bunk bed with ample storage, complemented by a curved work station.

